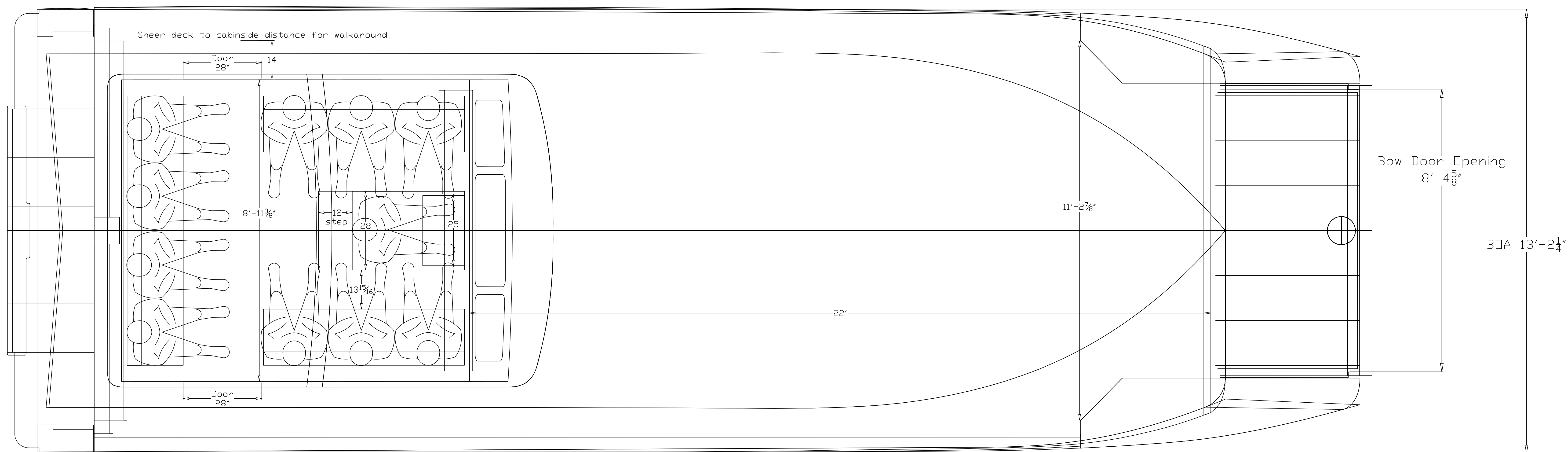
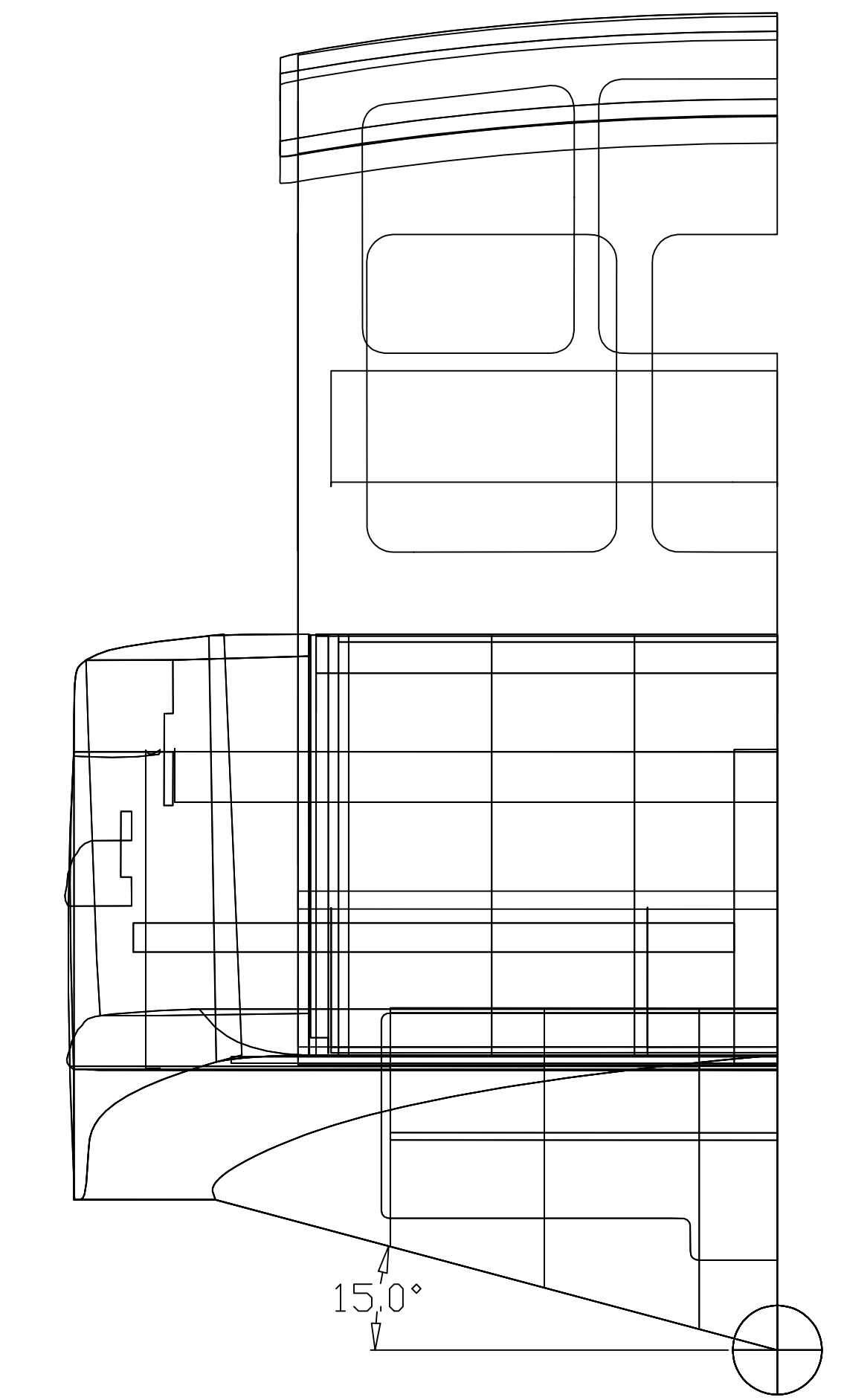
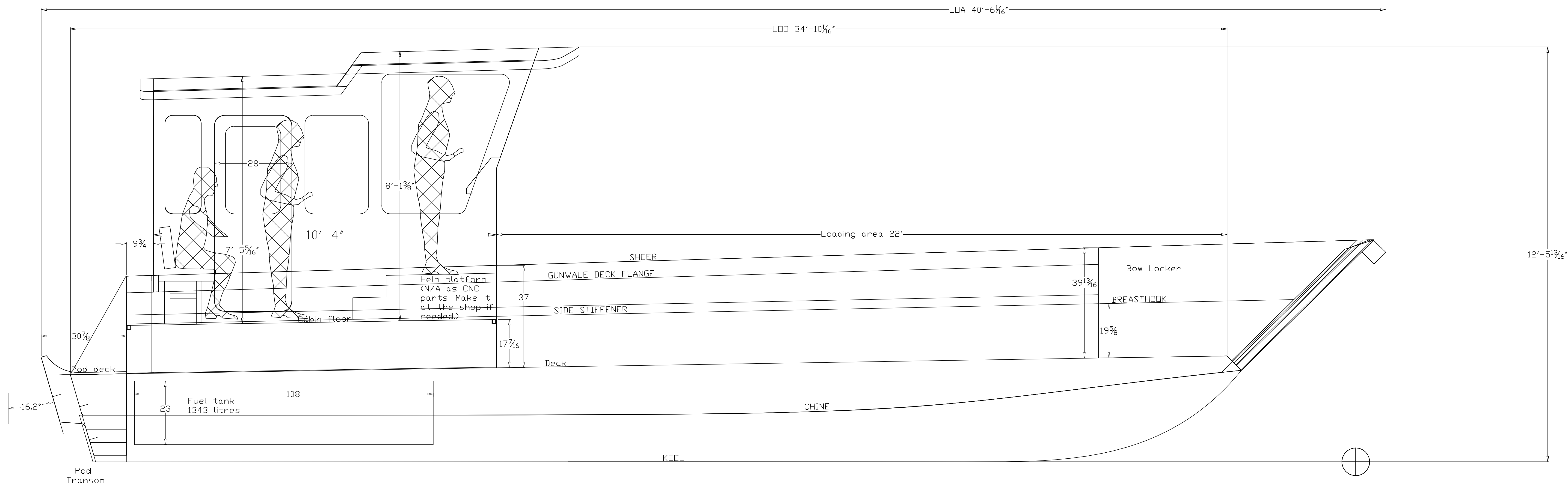


C090 40ft Aegean Landing Craft DB
 10' 4" Walk Around Cabin
 STUDY PLAN



Aluminum Plate List
 C090 Aegean 40ft Landing Craft DB
 Date: July 29 2022

- 3/4" plate
1 sheet= 3/4"x4ftx10ft---ALLDY 5086 H116
 - 1/2" plate
1 sheet= 1/2"x4ftx12ft---ALLDY 5086 H116
 - 3/8" plate
1 sheet= 3/8"x4ftx20ft---ALLDY 5086 H116
 - 5/16" plate
4 sheets= 5/16"x8ftx20ft---ALLDY 5086 H116
1 sheet= 5/16"x6ftx10ft---ALLDY 5086 H116
 - 1/4" plate
20 sheets= 1/4"x5ftx20ft---ALLDY 5086 H116
2 sheets= 1/4"x6ftx20ft---ALLDY 5086 H116
1 sheet= 1/4"x8ftx20ft---ALLDY 5086 H116
 - 3/16" plate
2 sheets= 3/16"x4ftx20ft---ALLDY 5086 H116
5 sheets= 3/16"x5ftx20ft---ALLDY 5086 H116
3 sheets= 3/16"x6ftx12ft---ALLDY 5086 H116
2 sheets= 3/16"x4ftx12ft---ALLDY 5086 H116
1 sheet= 3/16"x5ftx12ft---ALLDY 5086 H116
 - 5/32" (.160")
1 sheet= 5/32"x5ftx20ft---ALLDY 5086 H116
1 sheet= 5/32"x5ftx10ft---ALLDY 5086 H116
- There is a total of 49 sheets

Builder is required to go through the construction drawings to confirm the extrusion list. This list does not include additional material that may be required while building an aluminum boat. This list does not include parts for jig assembly.

Aluminum Extrusion List
 C090 Aegean 40ft Landing Craft DB Raised Cabin
 Date: August 2 2022
 Updated on: Oct 03 2023
 ---All lengths are in 20ft---

- Sq tube: 20ft lengths
 6 lengths x 1/2" x 1" 6061-T6 sq tube
 14 lengths x 3/8" x 1-1/2" 6061-T6 sq tube
 8 lengths x 3/16" x 2" 6061-T6 sq tube
 4 lengths x 1/4" x 4" 6061-T6 sq tube

- Rec. tube: 24ft lengths
 3 lengths x 3/8" x 2" x 4" 6061-T6 rec. tube
 1 length x 3/8" x 1-1/2" x 3" 6061-T6 rec. tube

- Half Pipe: 20ft lengths
 4 lengths x 2" sch. 40 half pipe

Aluminum or steel Plate List
 C090 Aegean 40ft Landing Craft DB
 November 29 2021
 JIG PARTS ONLY

- 1/4" sheet
 1 sheet= 1/4" x 4ft x 12ft
 4 sheets= 1/4" x 4ft x 20ft

There is a total of 5 sheets

- Flatbar: 20ft lengths
 4 lengths x 1/2" x 2" 6061-T6 aluminum Flatbar

- Angle Bar: 20ft lengths
 8 lengths x 3/16" x 1 1/2" x 1 1/2" 6061-T6 aluminum Angle Bar
 3 lengths x 1/4" x 1-1/2" x 1-1/2" 6061-T6 aluminum Angle Bar
 1 length x 1/2" x 2" x 2" 6061-T6 aluminum Angle Bar
 25 lengths x 1/4" x 3" x 3" 6061-T6 aluminum Angle Bar

C090 Aegean 40ft LC DB w/ 10'4"
 Walk Around Cabin
 Length Over All-----40' 6"
 Length On Deck ----- 34' 10"
 Beam-----13'-3"
 Max Displacement--33,000 lbs
 (10 passengers + driver, 12,000lbs payload, 1343 litres Fuel)
 Projected speed @ Max Disp. 29 knots
 Light Ship - 21,248 lbs
 (1 driver, 336 litres Fuel, 3,500 lbs cargo/ballast)
 Projected speed @ Disp. 37 knots
 Deadrise----- 15 deg
 Power----- Twin Merc Verado 600hp
 Door clear opening --- 8ft 4in
 Designed by A.B.COPE LTD.
 Designer-Bruce Cope
 August 2 2022

P 1