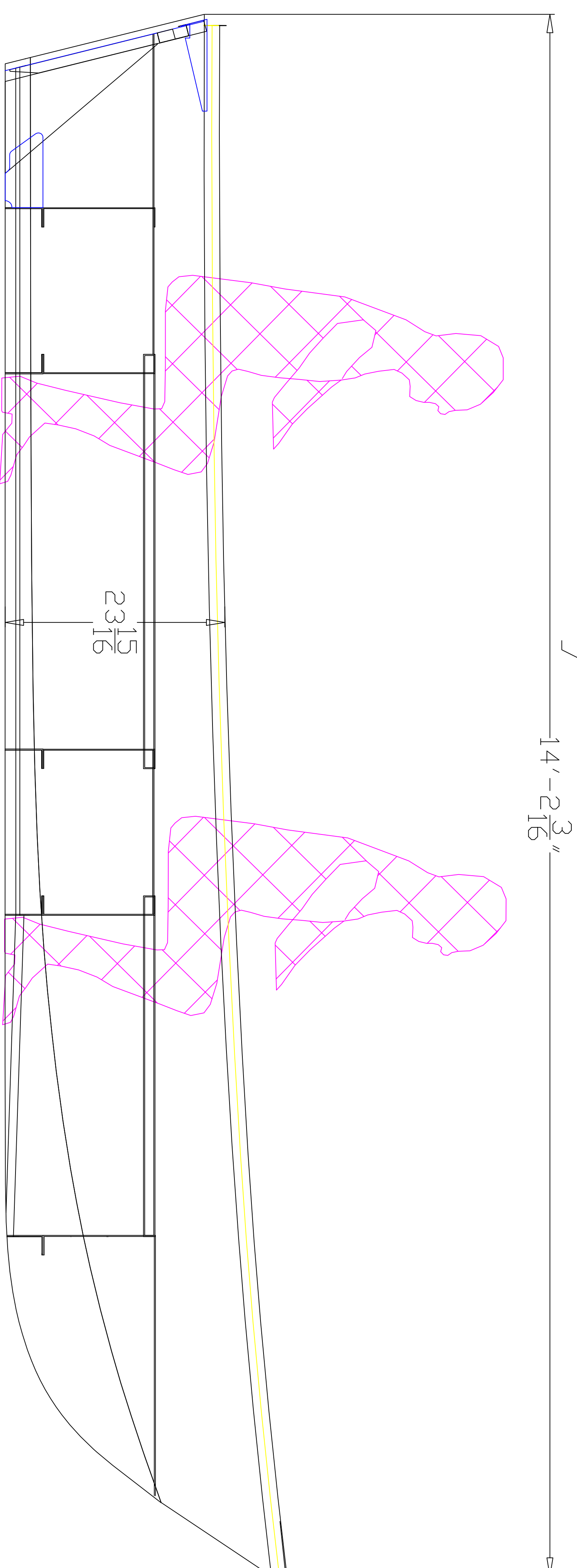


Cope 14ft Skiff Study Plan



Cope 14ft aluminum skiff

Length-----14ft 2-3/16"
 Beam-----6'
 Power-----Maximum 25 hp outboard
 Draft-----6.4 degrees

Designed by A.B.COPE LTD.
 Designer-Bruce Cope
 Sept. 1987

P 1

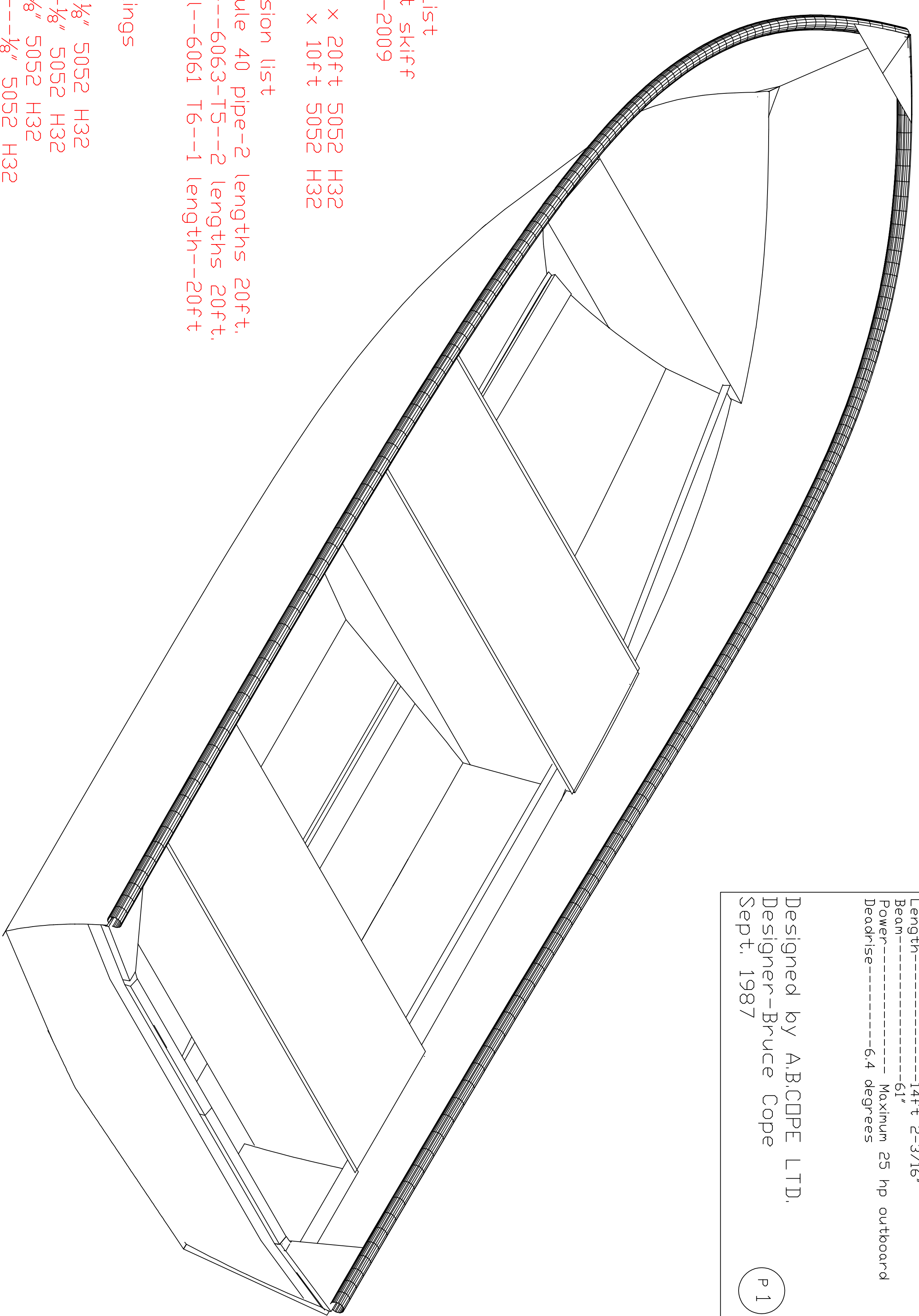


Plate List
 Cope 14 ft skiff
 Sept 24-2009

2 sheets 1/8" x 4ft x 20ft 5052 H32
 1 sheet .100" x 5ft x 10ft 5052 H32

Extrusion list
 1-1/4" 6061-T6 schedule 40 pipe-2 lengths 20ft.
 1/8" x2"x1" angle bar--6063-T5--2 lengths 20ft.
 1/8" x 1" x 3/4" channel--6061 T6--1 length--20ft

Scantlings

Bottom plate---1/8" 5052 H32
 Sideshell plate--1/8" 5052 H32
 Transom-----1/8" 5052 H32
 Bottom frames---1/8" 5052 H32
 Bottom and transom channels--1/8" 5052 H32
 Transom knee--1/8" 5052 H32
 Corner brackets--1/8" 5052 H32
 Anchor locker---.100" 5052 H32
 Seat plates---.100" 5052 H32

Extrusions
 Side shell longitudinal--3/16" x 2" FB 6061T6
 Sheer pipe--1-1/4" schedule 40 pipe
 Keel channel--1/8" x 1" x 3/4"-- 6061 T6